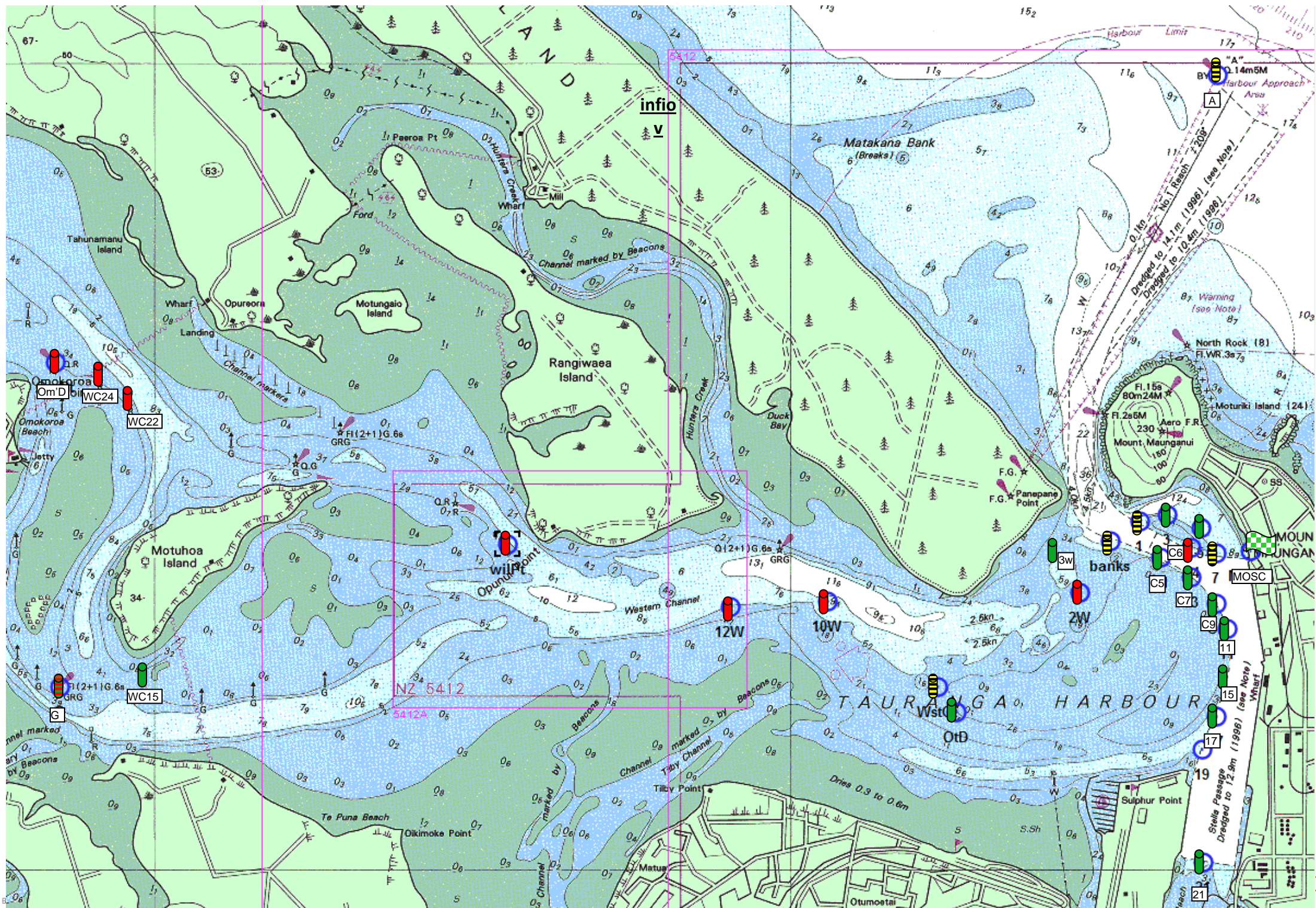


MMYC Course Sheet

Course	Marks to be Observed															Approximate Distance:	
A Division courses must observe Banks, C5, C7, 11 & OtD. Start & Finish is between 7 & MOSC G to Starboard Turning point to Port																	
1	start	21(P)	12W (S)	7(S)	17(P)	C5(P)	3W (P)	17(P)	Finish							12.2	
2	start	A (P)	Karewa(S)	A (S)	finish											15.8	
3	start	C5(P)	G (P)	10W(S)	12W(P)	7 (S)	21(P)	Finish								15.9	
4	start	A(P)	12W(S)	7(S)	21(S)	Finish										12.9	
5	start	17(P)	7(P)	1(S)	3(S)	5(S)	21(S)	1(S)	3(S)	5(S)	17(S)	1(S)	3(S)	5(S)	17(P)	Finish	11.2
6	start	C5(p)	17(S)	wstOt(S)	12W(P)	C5(S)	21(P)	finish									9.2
7	start	17(P)	C5(P)	12W(S)	7(S)	21(S)	C5(P)	21(S)	Finish								13.1
8	start	wilPt(P)	10W(S)	wstOt(P)	17(P)	21(P)	7(P)	17(P)	finish								11.4
9	start	A (P)	12W(S)	10W(S)	wilPt(P)	7(S)	17(P)	Finish									14.6
10	start	17(P)	7(P)	21(S)	7(P)	17(P)	Finish										6.8
11	start	wilPt(P)	wstOt(S)	10W(S)	C5(S)	21(P)	7(P)	17(P)	finish								13.1
12	start	5(P)	3(P)	1(S)	17(P)	1(S)	3(S)	5(S)	17(P)	Finish							5.3
13	start	5(P)	3(P)	1(P)	12W(P)	3W(P)	12W(P)	1(S)	3(S)	5(S)	7(S)	21(P)	1(S)	3(S)	5(S)	finish	12.4
14	start	C5(P)	12W(P)	WC15(S)	Motuhoa(S)	WC22(P)	WC24(P)	Om'D(S)	C5(S)	Finish							14.0
15	start	wilPt(P)	7(S)	17(P)	Finish												9.2
16	start	C5(P)	Om'D (P)	10W(S)	7(S)	17(P)	Finish										16.3
B Division courses must observe C5, C7, 11 & OtD. Start & Finish is between 7 & MOSC G to Starboard Turning point to Port Way-Point course 2 37.33.00S 176.09.00E																	
1	start	17(P)	12W(S)	7(S)	15(P)	C5(P)	3W(P)	15(P)	Finish								10.00
2	start	A(P)	Waypt (S)	A(S)	finish												13.00
3	start	C5(P)	G(P)	7(S)	17(P)	finish											13.6
4	start	A(P)	10W(P)	7(S)	17(P)	finish											10.4
5	start	17(P)	7(P)	1(S)	3(S)	5(S)	17(P)	1(S)	3(S)	5(S)	17(S)	1(S)	3(S)	5(S)	15(P)	Finish	10.1
6	start	C5(P)	15(S)	wstOt(S)	10W(P)	C5(S)	7(S)	17(P)	finish								7
7	start	15(P)	C5(P)	10W(P)	7(S)	21(S)	C5(P)	17(P)	finish								10.2
8	start	12W(P)	10W(S)	wstOt(P)	17(P)	7(P)	17(P)	finish									8.8
9	start	A (P)	12W(S)	10W(S)	12W(S)	7(S)	15(P)	Finish									10.8
10	start	15(P)	7(P)	17(S)	7(P)	15(P)	Finish										4.4
11	start	wilPt(P)	wstOt(S)	C5(S)	21(P)	7(P)	15 (P)	finish									11.4
12	start	5(P)	3(P)	1(S)	15(P)	1(S)	3(S)	5(S)	15(P)	Finish							4.2
13	start	5(P)	3(P)	1(P)	10W(P)	3W(P)	10W(P)	1(S)	3(S)	5(S)	7(S)	17P)	1(S)	3(S)	5(S)	finish	12.2
14	start	C5(P)	12(P)	WC15(S)	Motuhoa(S)	C5(S)	Finish										12.4
15	start	12W(P)	7(S)	15(P)	finish												6.04
16	start	C5(P)	Om'D (P)	10W(S)	C5(P)	finish											12.4

Ver. 5 June 201



infio

NZ 5412

5412A

Opunui Point

banks

TAURANGA HARBOUR

MOUNT MAUNGANUI